



WiFi Outdoor Antenna

MODEL: EHN-603W/MIC

WI-RD-D-134 V1.0

2400~2500MHz,5150~5850MHz



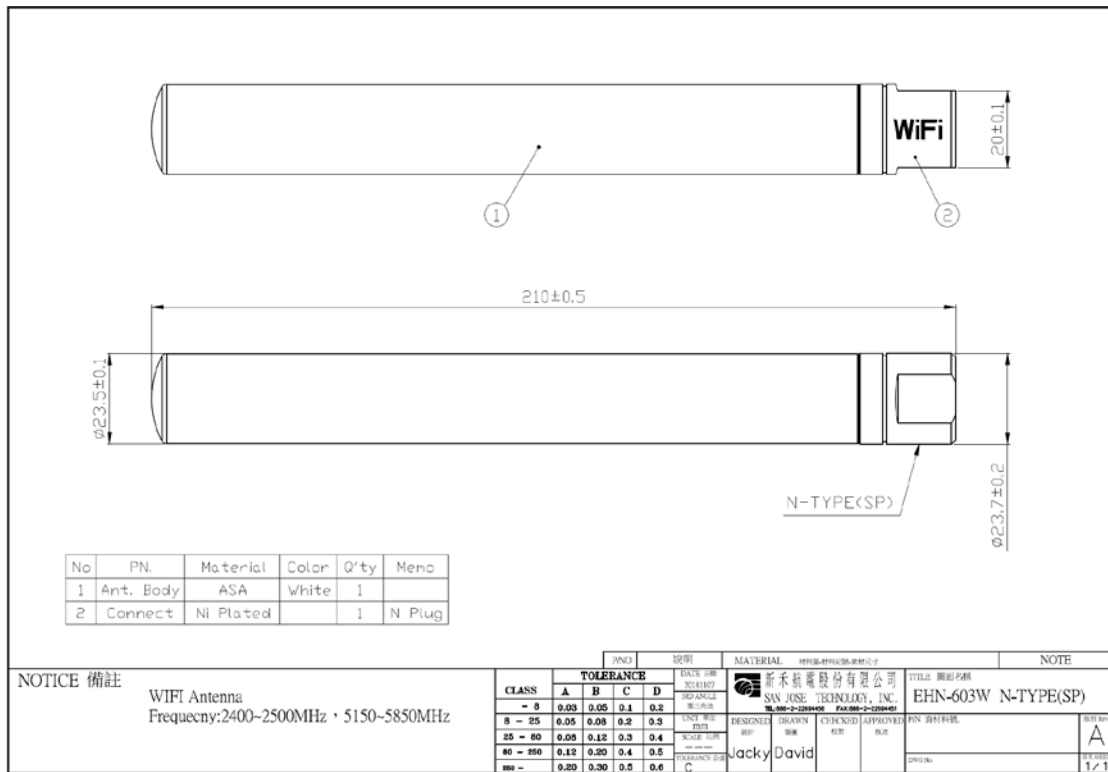
© San Jose Technology, Inc. All specifications subject to change without notice.

Specifications:

| | |
|---------------------------------|---|
| Frequency: | 2400~2500MHz,5150~5850MHz |
| Gain: | 2400~2500MHz :2.5dBi / 5150~5850MHz :4dBi |
| V.S.W.R: | < 2.0 |
| Impedance: | 50 Ohm |
| Connector: | N-Type(male) |
| Polarization: | Linear |
| Power Handling Capacity: | 10W |
| Dimension: | Ø24mm x 210mm(L) |
| Operation Temperature: | -40°C to +85°C |
| Storage Temperature: | -30°C to +23°C |
| Waterproof Level: | IP67 |

新禾航電
 2019.04.03
 文管發行

Mechanical Diagram:

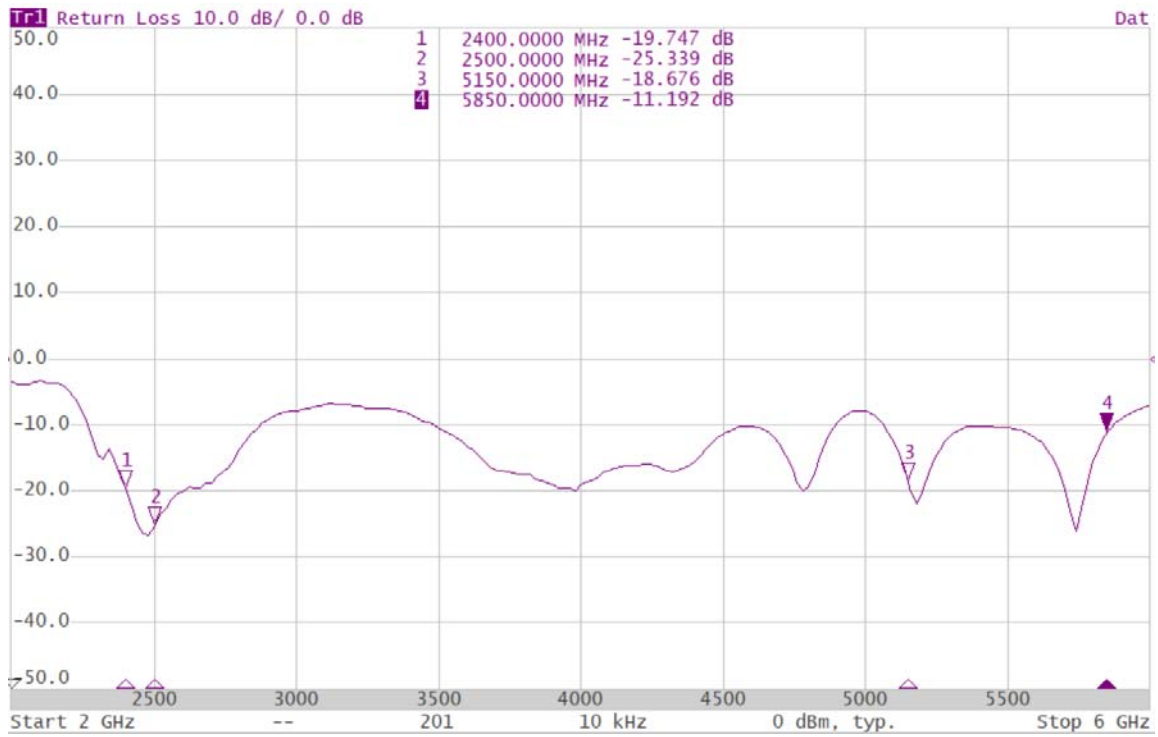


©San Jose Technology, Inc.
All specifications subject to change without notice.

Unit: mm

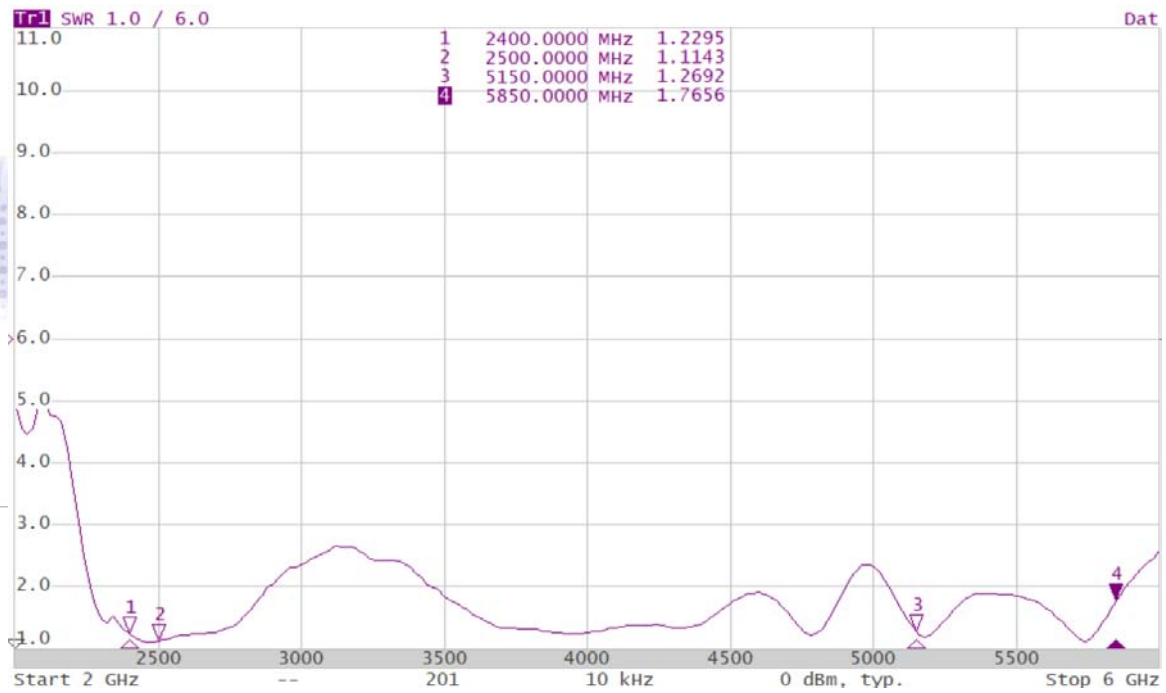
新禾航電
2019.04.03
文管發行

Return Loss :



©San Jose Technology, Inc.
All specifications subject to change without notice.

VSWR :



WiFi Gain & Efficiency:

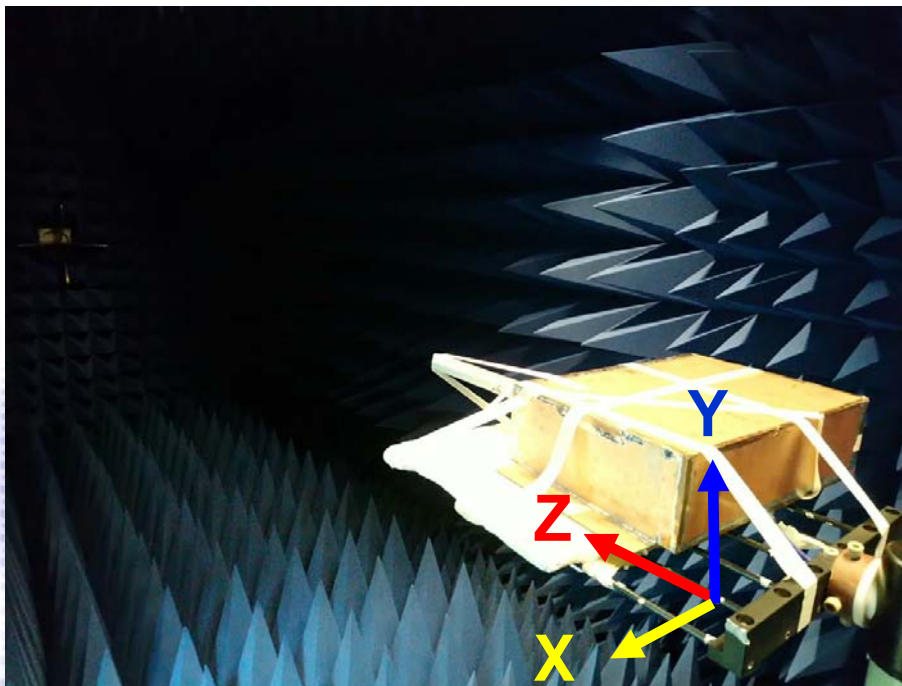
| | | | |
|----------------|-------|-------|------|
| Frequency(MHz) | 2400 | 2450 | 2500 |
| Efficiency(%) | 76.83 | 77.91 | 72.8 |
| Gain(dBi) | 3.49 | 3.51 | 3.04 |

| | | | | | | | |
|----------------|-------|-------|-------|------|-------|-------|-------|
| Frequency(MHz) | 5150 | 5250 | 5350 | 5450 | 5500 | 5725 | 5850 |
| Efficiency(%) | 85.86 | 83.22 | 71.15 | 69.3 | 71.96 | 64.72 | 57.17 |
| Gain(dBi) | 5.4 | 4.93 | 3.97 | 2.89 | 2.61 | 3.01 | 2.88 |

©San Jose Technology, Inc.
 All specifications subject to change without notice.

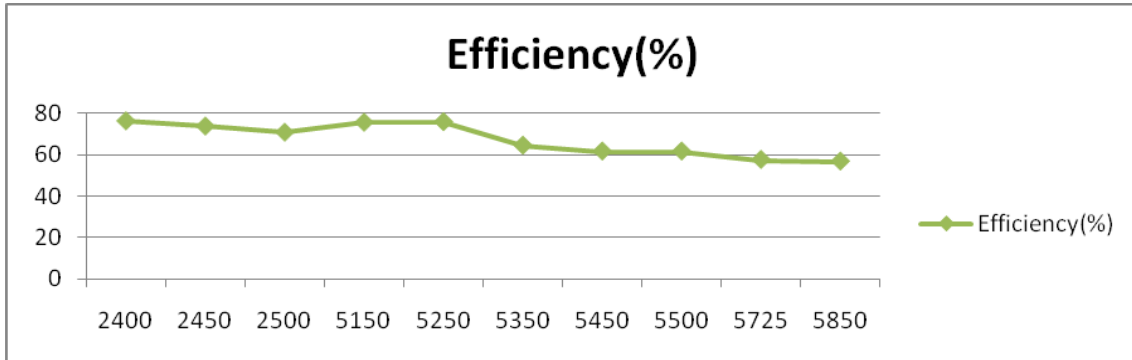
Antenna Testing Setup:

- The antenna is tested in the SANAV CTIA standard 3D anechoic chamber

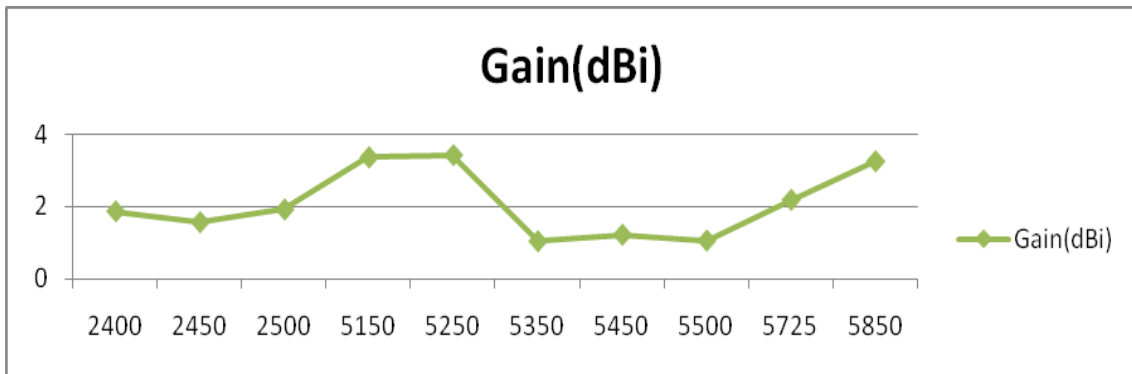


3 axis of antenna on the rotation table

Antenna Efficiency Curve – Wifi:



Antenna Gain Curve - Wifi:

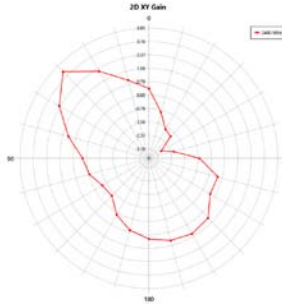


©San Jose Technology, Inc.
All specifications subject to change without notice.

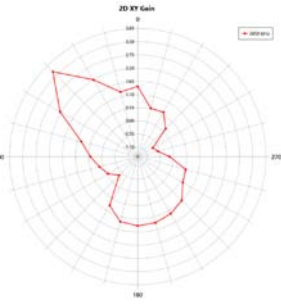
新禾航電
 2019.04.03
 文管發行

**2D,3D Radiation pattern:
LTE Antenna 2D Radiation Pattern:**

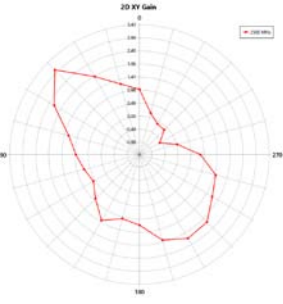
2400MHz



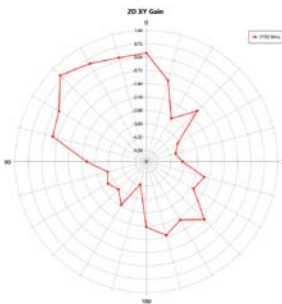
2450MHz



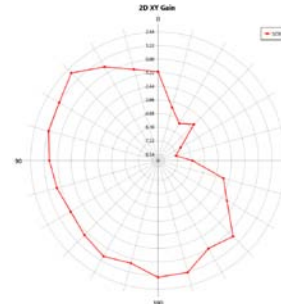
2500MHz



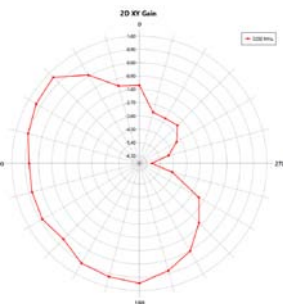
5150MHz



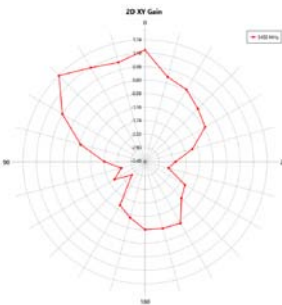
5250MHz



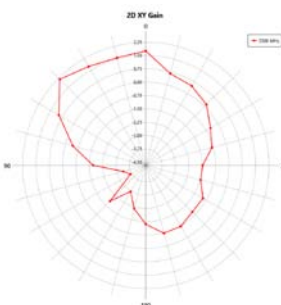
5350MHz



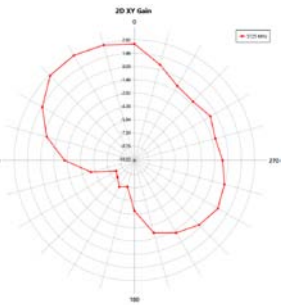
5450MHz



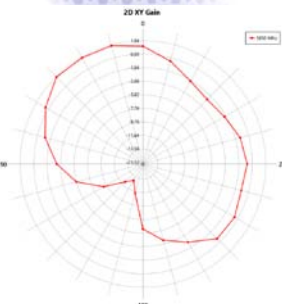
5500MHz



5725MHz



5850MHz

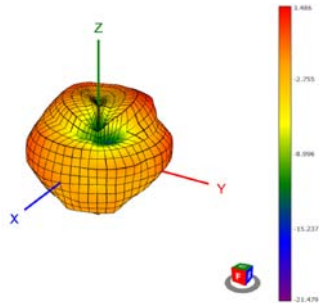


©San Jose Technology, Inc.
All specifications subject to change without notice.

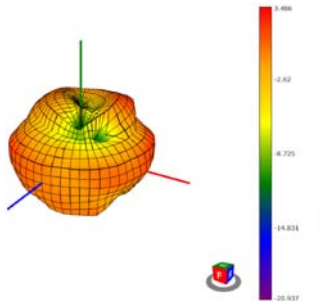
新禾航電
 2019.04.03
 文管發行

LTE Antenna 3D Radiation Pattern:

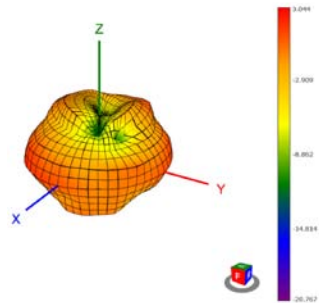
2400MHz



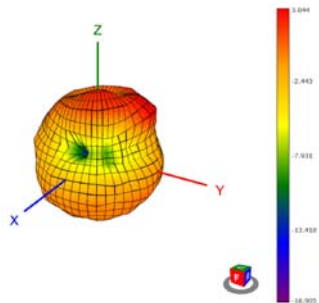
2450MHz



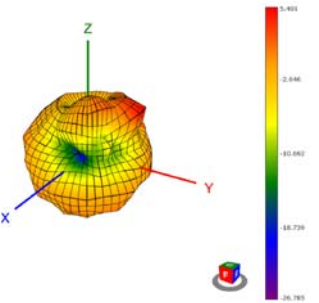
2500MHz



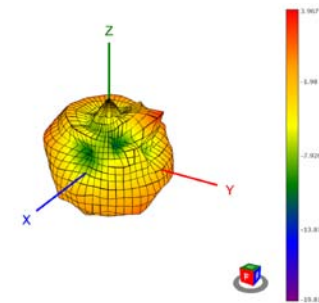
5150MHz



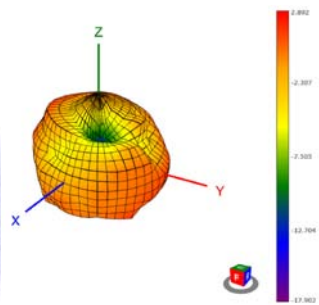
5250MHz



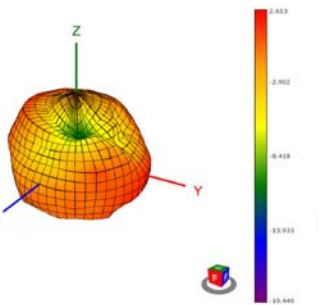
5350MHz



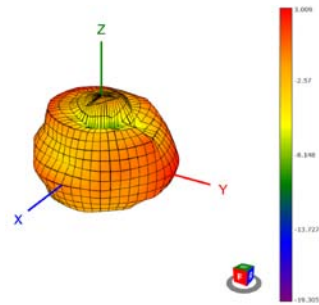
5450MHz



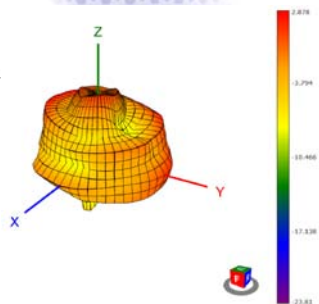
5500MHz



5725MHz



5850MHz



©San Jose Technology, Inc.
 All specifications subject to change without notice.

新禾航電
 2019.04.03
 文管發行